

**Addiction and Prevention Services  
State Quality Committee**

**Final**

**AGGREGATE ANALYSIS REPORT**

**Reporting Period**   **FROM:** July 1, 2010     **TO:** June 30, 2011  
   **FY2011 Annual Summary**

**Unit/Team/Department:**  
PIHP Quality Improvement

**Topic/Project:**  
Over and Under Utilization  
    **Higher Levels of Care by Diagnosis (VO #12, Grid Row #9)**

**Monitoring Standard:**  
42 CFR 438.240 (a and b) Quality Assessment and Performance Improvement Program  
Utilization Management policies and procedures:  
42 CFR 438.210 (b-e) Coverage and authorization of services  
42 CFR 438.242 Health Information System

**Goal:**  
The PIHP will track and report quarterly to SRS/AAPS utilization of higher levels of care by diagnosis.

**Objectives:**  
To assure the PIHP is capturing the data  
To evaluate for trends that may require system intervention and education  
To allow data to be presented consistently for Committee evaluation and response

**Data Collection Activities:**  
Data was collected from the ValueOptions CareConnect (claims) system. Utilization report including Hospital Detox, Reintegration, Intermediate split by adult/adolescent, and Social Detox services reported together. The report details include the diagnosis description to include 'abuse' or 'dependency' along with the percent of total unit. The report will include graphs showing a visual representation of the diagnosis distribution. Only the top ten diagnoses for the overall fiscal year-to-date are displayed. Any other diagnosis encountered is included in the "All Other Diagnoses" category. When a member presents in the "Other" region category, the county/region of origin could not be located for that member. This report will be provided as an aggregate, as well as by SRS region.

**Definitions:**

Other Dependency  
ValueOptions has clarified the "other dependency" category. "Diagnosis codes 304.90 and 292.0 are reporting as "other dependency". The actual diagnosis code description for these is as follows: 304.90 is "Unspecified Drug Dependency" and 292.0 is "Drug Withdrawal Syndrome".

**Addiction and Prevention Services  
State Quality Committee**

The majority of claims that encounter these diagnoses come in as 304.90, which accounts for roughly 99% of the units reported in this diagnosis category.”

Other Abuse

ValueOptions has clarified the “other abuse” category. The first code falling into this category is 305.10, tobacco use disorder, which ValueOptions paid for up until January 1, 2009. 305.80, antidepressant type abuse is also in this category. Codes 305.90, 305.91, 305.92 and 305.93 are included as “other mixed or unspecified drug abuse”. The final code, V71.09 “other suspected mental condition” is used by providers as a billing code for assessments if the assessment does not show a substance use disorder. The code allows providers to be paid for the assessment but acknowledges that there is no need for treatment.

All Other Diagnoses

Only the top ten diagnoses for the overall Fiscal Year to Date are displayed in the report. Any other diagnosis encountered is included in the “All Other Diagnoses” category.

**Results: See Attachment A**

**Conclusions:**

**Fiscal YTD by Region, All Funding Sources, All Ages Higher Levels of Care (Top 3)**

\*When a member shows up in the “Other” region category, the county/region could not be found.

**Top 3 Diagnosis Fiscal YTD 2011 by SRS Region**

SRS Region	Alcohol Dependency	Alcohol Abuse	Cannabis Dependency	Cocaine Dependency	Amphetamines Dependency	Polysubstance Dependency
<b>Kansas City</b>	First			Second	Third	
<b>Northeast</b>	First			Third	Second	
<b>South</b>						
<b>Central</b>	First				Second	Third
<b>Southeast</b>	First				Second	Third
<b>West</b>	First	Second	Third			
<b>Wichita</b>	First			Second	Third	
<b>Other</b>	First		Second	Third		

**Addiction and Prevention Services  
State Quality Committee**

**Top 3 Diagnosis Fiscal YTD 2010 by SRS Region**

<b>SRS Region</b>	<b>Alcohol Dependency</b>	<b>Cocaine Dependency</b>	<b>Cannabis Dependency</b>	<b>Amphetamines Dependency</b>	<b>Alcohol Abuse</b>	<b>Opioid Dependency</b>	<b>Polysubstance Dependency</b>
<b>Kansas City</b>	First	Second	Third				
<b>Northeast</b>	First	Third		Second			
<b>South Central</b>	First		Third	Second			
<b>Southeast</b>	First		Third	Second			
<b>West</b>	First		Second				Third
<b>Wichita</b>	First	Second		Third			
<b>Other</b>	Second				First	Third	

Trending from FY10 to FY11 (using above charts for comparison):

<b>SRS Region</b>	<b>First</b>	<b>Second</b>	<b>Third</b>
<b>Kansas City</b>	No change – Alcohol Dependency	No change – Cocaine Dependency	Changed from Cannabis Dependency to Amphetamines Dependency
<b>Northeast</b>	No change – Alcohol Dependency	No change – Amphetamines Dependency	No change – Cocaine Dependency
<b>South Central</b>	No change – Alcohol Dependency	No change – Amphetamines Dependency	Changed from Cannabis Dependency to Polysubstance Dependency
<b>Southeast</b>	No change – Alcohol Dependency	No change – Amphetamines Dependency	Changed from Cannabis Dependency to Polysubstance Dependency
<b>West</b>	No change – Alcohol Dependency	Changed from Cannabis Dependency to Alcohol Abuse	Changed from Polysubstance Dependency to Cannabis Dependency
<b>Wichita</b>	No change – Alcohol Dependency	No change – Cocaine Dependency	No change – Amphetamines Dependency
<b>Other</b>	Changed from Alcohol Abuse to Alcohol Dependency	Changed from Alcohol Dependency to Cannabis Dependency	Changed from Opioid Dependency to Cocaine Dependency

\*We do not have Fiscal YTD information for FY2009, therefore, annual trending cannot be determined for that fiscal year.

**Addiction and Prevention Services  
State Quality Committee**

FY2011 Annual Summary

As recommended in the last aggregate analysis, ValueOptions continues to provide annual reports showing a full fiscal year (see Attachment A).

As recommended in the last aggregate analysis, trending by Fiscal YTD is completed and shown in the table above.

As recommended in the last aggregate analysis, based upon the change in prevalence of Amphetamines dependency, it was recommended by the Committee for VO to bring some of this data (top three substances of abuse and current trending) to April face-to-face provider meeting. This recommendation was completed.

Adults:

- For Medicaid, trending is rather consistent from year-to-year. The top 3 leading diagnosis Fiscal YTD in order from highest to lowest is:
  - For FY2011, Alcohol dependency (26.14%), Amphetamines dependency (16.90%), and Cocaine dependency (14.82%).
  - For FY2010, Alcohol dependency (25.66%), Amphetamines dependency (17.81%), and Cocaine dependency (17.29%).
  - For FY2009, Alcohol dependency was also the leading diagnosis. For FY2009, the second leading diagnosis was Cocaine dependency or Amphetamines dependency
- For AAPS funded, trending is also consistent from year-to-year. The top 3 leading diagnosis Fiscal YTD in order from highest to lowest is:
  - For FY2011, Alcohol dependency (35.18%), Amphetamines dependency (16.63%), and Cocaine dependency (9.22%)
  - For FY2010, Alcohol dependency (40.68%), Amphetamines dependency (14.61%), and Cocaine dependency (10.69%).
  - For FY2009, Alcohol dependency was the leading diagnosis each quarter. The second leading diagnosis was Cocaine dependency or Amphetamine dependency.

Adolescents:

- For Medicaid, trending is consistent for the top diagnosis year-to-year (Cannabis dependency). The second and third leading diagnoses fluctuated. The top 3 leading diagnosis Fiscal YTD in order from highest to lowest is:
  - For FY2011, Cannabis dependency (75.46%), Alcohol dependency (9.52%), and Cannabis abuse (5.53%)
  - For FY2010, Cannabis dependency (70.71%), Amphetamines dependency (7.98%), and Alcohol dependency (7.27%).
  - For FY2009, Cannabis dependency was the leading diagnosis each quarter and the second leading diagnosis varied by quarter.

**Addiction and Prevention Services  
State Quality Committee**

- For AAPS funded, trending is also consistent for the top diagnosis year-to-year (Cannabis dependency). The second and third leading diagnoses fluctuated. The top 3 leading diagnosis Fiscal YTD in order from highest to lowest is:
  - For FY2011, Cannabis dependency (69.64%), Alcohol dependency (7.03%), and Opioid dependency (6.86%)
  - For FY2010, Cannabis dependency (70.71%), Amphetamines dependency (7.98%), and Alcohol dependency (7.27%).
  - For FY2009, Cannabis dependency was the leading diagnosis each quarter and the second leading diagnosis varied by quarter.

All Funding Sources, All Ages, Statewide:

- Trending also appears rather consistent from year-to-year.
  - For FY2011, Alcohol dependency (32.05%), Amphetamines dependency (16.16%), and Cocaine dependency (9.96%)
  - For FY2010, Alcohol dependency (36.20%), Amphetamines dependency (14.94%), and Cannabis dependency (11.81%).

**Preliminary Recommendations to Committee:**

- It is recommended that the Committee continue to monitor trends.
- It is also recommended by the Committee that this aggregate analysis be posted on the ValueOptions website for public access.
- **It is recommended that ValueOptions run this report annually rather than quarterly due to consistency in leading diagnosis trending.**
- **The aggregate report will be eliminated and the report by ValueOptions will be reduced to presenting trending change as shown in the bottom table, page 3.**

**Date Presented to SQC:** 2/10/2012

**BY:** Cissy McKinzie

**Recommendations from the Committee for action:** Committee approves of the Preliminary Recommendations as shown above. Enhancements made by the SQC to the Preliminary Recommendations are noted above in **bold**.

**Person Responsible to follow-up and date due:** Kim Brown 5/18/12

## Addiction and Prevention Services State Quality Committee

### Attachment A

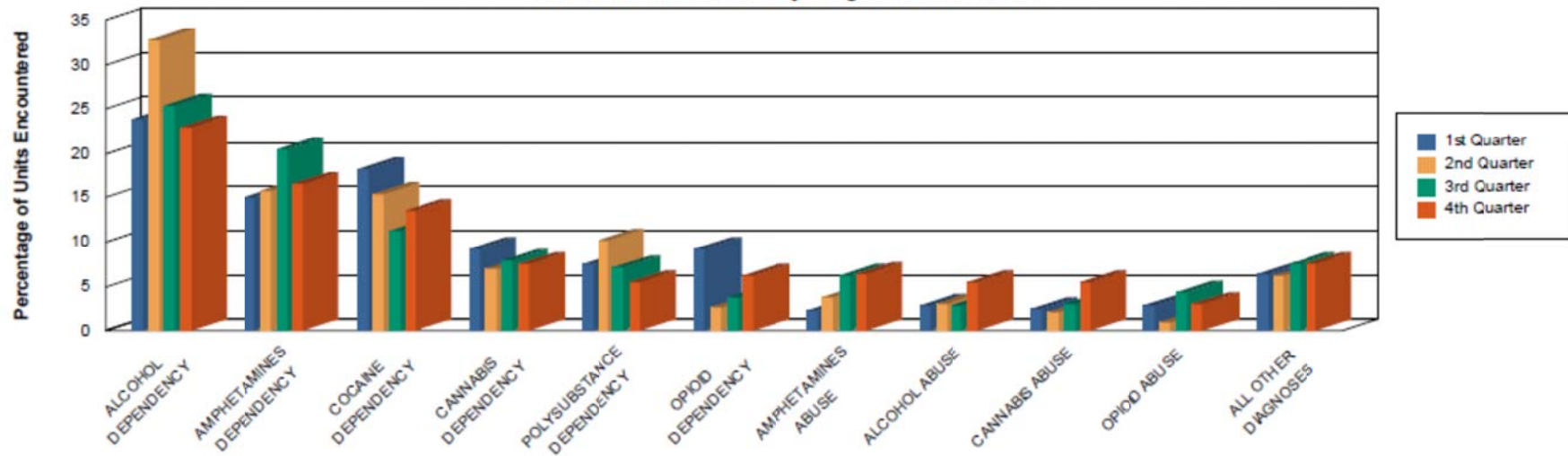
#### Medicaid Adult:

Medicaid - Adult - HLOC - Statewide

July 1, 2010 to June 30, 2011

Diagnosis	1st Quarter	2nd Quarter	3rd Quarter	4th Quarter	Fiscal YTD
ALCOHOL DEPENDENCY	23.97%	32.71%	25.47%	22.98%	26.14%
AMPHETAMINES DEPENDENCY	15.06%	15.88%	20.57%	16.53%	16.90%
COCAINE DEPENDENCY	18.33%	15.53%	11.30%	13.53%	14.82%
CANNABIS DEPENDENCY	9.25%	7.03%	7.87%	7.50%	7.96%
POLYSUBSTANCE DEPENDENCY	7.54%	10.23%	7.15%	5.53%	7.58%
OPIOID DEPENDENCY	9.17%	2.64%	3.85%	6.17%	5.62%
AMPHETAMINES ABUSE	2.25%	3.72%	6.16%	6.38%	4.55%
ALCOHOL ABUSE	2.84%	2.98%	2.78%	5.47%	3.53%
CANNABIS ABUSE	2.43%	2.12%	3.05%	5.42%	3.26%
OPIOID ABUSE	2.83%	1.02%	4.29%	2.98%	2.78%
ALL OTHER DIAGNOSES	6.34%	6.14%	7.51%	7.51%	6.86%

% of Units Encountered by Diagnosis and Quarter



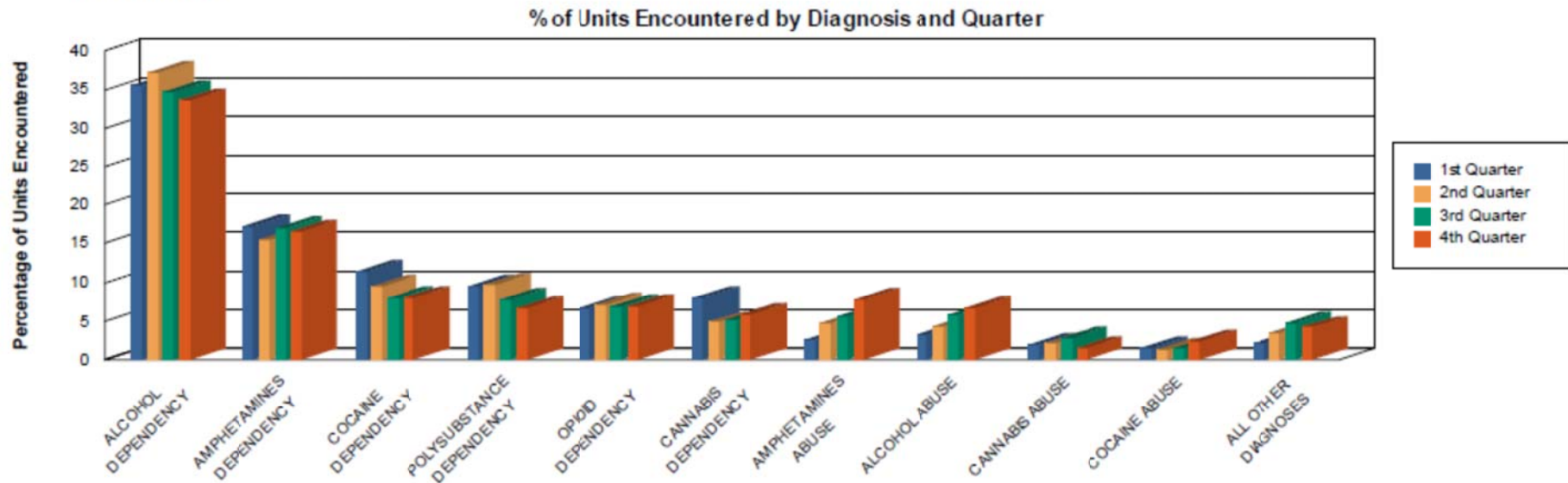
## Addiction and Prevention Services State Quality Committee

### AAPS Adult:

AAPS - Adult - HLOC - Statewide

July 1, 2010 to June 30, 2011

Diagnosis	1st Quarter	2nd Quarter	3rd Quarter	4th Quarter	Fiscal YTD
ALCOHOL DEPENDENCY	35.60%	37.21%	34.61%	33.63%	35.18%
AMPHETAMINES DEPENDENCY	17.30%	15.42%	17.11%	16.54%	16.63%
COCAINE DEPENDENCY	11.40%	9.50%	8.05%	7.95%	9.22%
POLYSUBSTANCE DEPENDENCY	9.44%	9.71%	7.75%	6.65%	8.33%
OPIOID DEPENDENCY	6.68%	7.09%	6.90%	6.84%	6.87%
CANNABIS DEPENDENCY	8.08%	4.86%	5.12%	5.85%	6.04%
AMPHETAMINES ABUSE	2.62%	4.69%	5.56%	7.72%	5.19%
ALCOHOL ABUSE	3.18%	4.36%	5.73%	6.71%	5.03%
CANNABIS ABUSE	1.88%	2.22%	2.88%	1.61%	2.12%
COCAINE ABUSE	1.58%	1.41%	1.47%	2.31%	1.71%
ALL OTHER DIAGNOSES	2.24%	3.53%	4.81%	4.21%	3.69%



## Addiction and Prevention Services State Quality Committee

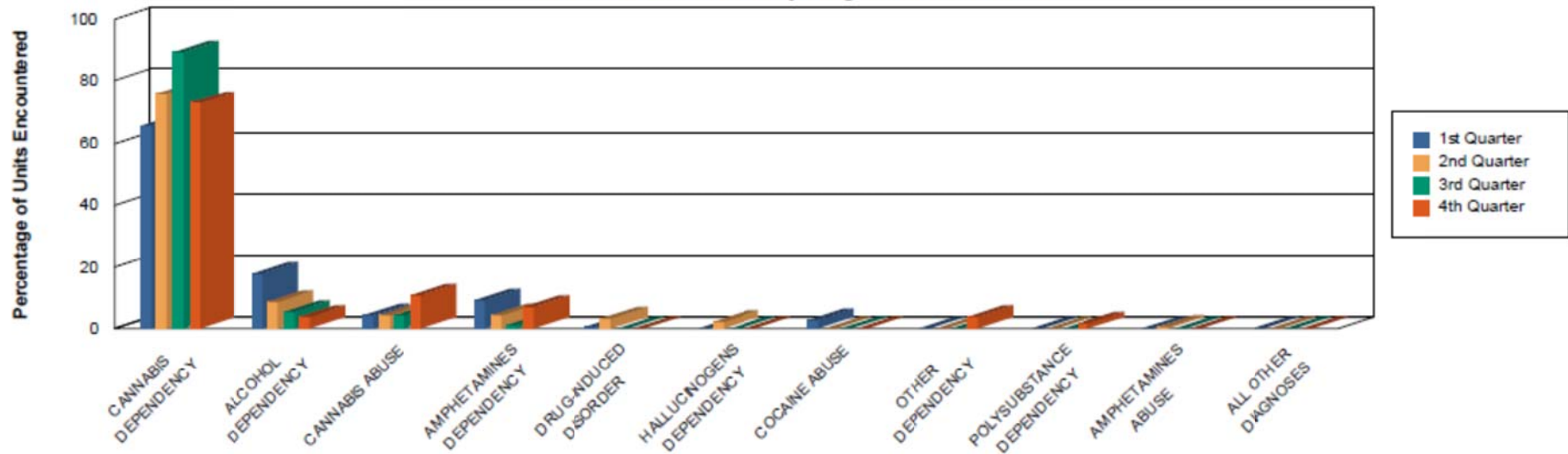
### Medicaid Adolescent:

Medicaid - Adolescent - HLOC - Statewide

July 1, 2010 to June 30, 2011

Diagnosis	1st Quarter	2nd Quarter	3rd Quarter	4th Quarter	Fiscal YTD
CANNABIS DEPENDENCY	65.69%	76.01%	89.48%	72.99%	75.46%
ALCOHOL DEPENDENCY	18.02%	8.53%	5.20%	3.69%	9.52%
CANNABIS ABUSE	4.12%	4.43%	4.26%	10.80%	5.53%
AMPHETAMINES DEPENDENCY	9.06%	4.59%	0.95%	6.98%	5.51%
DRUG-INDUCED DISORDER	0.55%	3.22%	0.00%	0.00%	1.17%
HALLUCINOGENS DEPENDENCY	0.00%	2.33%	0.00%	0.00%	0.74%
COCAINE ABUSE	2.56%	0.00%	0.00%	0.00%	0.71%
OTHER DEPENDENCY	0.00%	0.00%	0.00%	3.69%	0.71%
POLYSUBSTANCE DEPENDENCY	0.00%	0.00%	0.00%	1.84%	0.36%
AMPHETAMINES ABUSE	0.00%	0.81%	0.00%	0.00%	0.25%
ALL OTHER DIAGNOSES	0.00%	0.08%	0.12%	0.00%	0.05%

% of Units Encountered by Diagnosis and Quarter





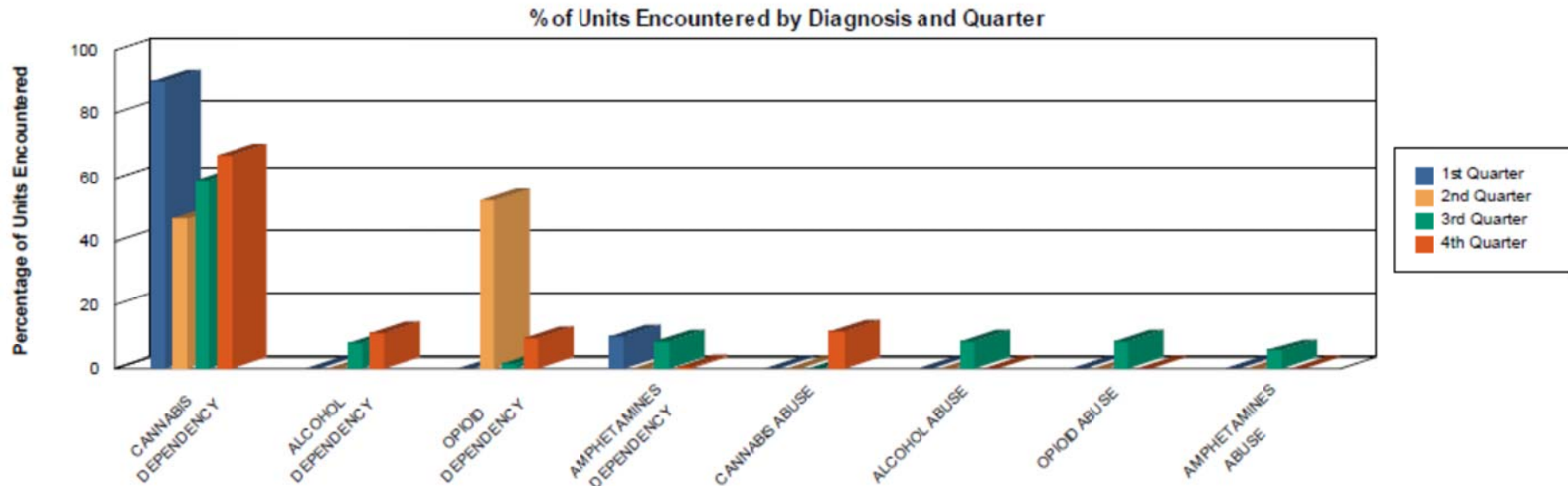
## Addiction and Prevention Services State Quality Committee

### AAPS Adolescent:

AAPS - Adolescent - HLOC - Statewide

July 1, 2010 to June 30, 2011

Diagnosis	1st Quarter	2nd Quarter	3rd Quarter	4th Quarter	Fiscal YTD
CANNABIS DEPENDENCY	89.97%	47.17%	59.08%	67.13%	69.64%
ALCOHOL DEPENDENCY	0.00%	0.00%	8.00%	11.22%	7.03%
OPIOID DEPENDENCY	0.00%	52.83%	1.54%	9.42%	6.86%
AMPHETAMINES DEPENDENCY	10.03%	0.00%	8.62%	0.80%	5.23%
CANNABIS ABUSE	0.00%	0.00%	0.00%	11.42%	4.89%
ALCOHOL ABUSE	0.00%	0.00%	8.62%	0.00%	2.40%
OPIOID ABUSE	0.00%	0.00%	8.62%	0.00%	2.40%
AMPHETAMINES ABUSE	0.00%	0.00%	5.54%	0.00%	1.54%



## Addiction and Prevention Services State Quality Committee

### All Funding Sources, All Ages, Statewide:

All Fund Sources - All Ages - HLOC - Statewide

July 1, 2010 to June 30, 2011

Diagnosis	1st Quarter	2nd Quarter	3rd Quarter	4th Quarter	Fiscal YTD
ALCOHOL DEPENDENCY	32.04%	34.68%	31.46%	30.34%	32.05%
AMPHETAMINES DEPENDENCY	16.42%	14.94%	17.18%	16.01%	16.16%
COCAINE DEPENDENCY	12.36%	10.32%	8.34%	8.71%	9.96%
CANNABIS DEPENDENCY	11.35%	9.04%	9.12%	9.00%	9.66%
POLYSUBSTANCE DEPENDENCY	8.57%	9.31%	7.28%	6.19%	7.79%
OPIOID DEPENDENCY	6.90%	5.85%	5.99%	6.57%	6.36%
AMPHETAMINES ABUSE	2.41%	4.27%	5.50%	7.12%	4.83%
ALCOHOL ABUSE	2.96%	3.83%	4.99%	6.17%	4.50%
CANNABIS ABUSE	2.06%	2.31%	2.93%	2.78%	2.52%
COCAINE ABUSE	2.16%	1.59%	1.56%	2.10%	1.87%
ALL OTHER DIAGNOSES	2.77%	3.85%	5.67%	5.02%	4.31%

% of Units Encountered by Diagnosis and Quarter

