

**Addiction and Prevention Services
State Quality Committee**

This report is based upon the diagnosis submitted the most for paid claims. All services for higher levels of care are in daily units. The report only shows the top ten diagnoses.

Final

AGGREGATE ANALYSIS REPORT

Reporting Period

FROM: April 1, 2008 **TO:** June 30, 2008

Unit/Team/Department:

PIHP Quality Improvement

Topic/Project:

Over and Under Utilization

Higher Levels of Care by Diagnosis (VO #12, Grid Row #10)

Monitoring Standard:

42 CFR 438.240 (a and b) Quality Assessment and Performance Improvement Program

Utilization Management policies and procedures:

42 CFR 438.210 (b-e) Coverage and authorization of services

42 CFR 438.242 Health Information System

Goal:

The PIHP will track and report quarterly to SRS/AAPS utilization of higher levels of care by diagnosis.

Objectives:

To assure the PIHP is capturing the data

To evaluate for trends that may require system intervention and education

To allow data to be presented consistently for Committee evaluation and response

Data Collection Activities:

Data was collected from the ValueOptions CareConnect (claims) system. Utilization report including Hospital Detox, Reintegration, Intermediate split by adult/adolescent, and Social Detox services reported together. The report details include the diagnosis description to include 'abuse' or 'dependency' along with the total # of units and percent of total unit. The report will include a pie graph showing a visual representation of the diagnosis distribution. This report will be provided as an aggregate, as well as by SRS region. Diagnoses will be broken out to the 5th digit of detail.

Results: See next page

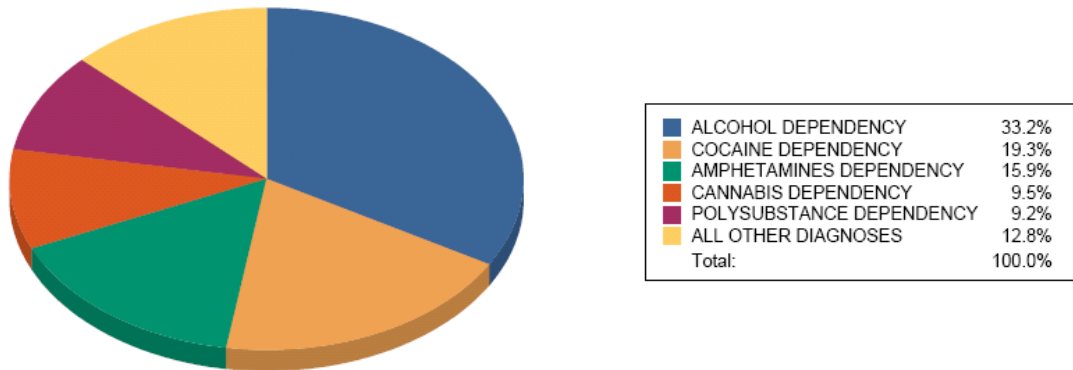
Addiction and Prevention Services State Quality Committee

All Regions both Funding Sources (Adult):

Hospital Detoxification and Higher Levels of Care Units by Diagnosis - Top 10

Diagnosis	Units	% of Total
ALCOHOL DEPENDENCY	8,123	33.21%
COCAINE DEPENDENCY	4,709	19.25%
AMPHETAMINES DEPENDENCY	3,893	15.92%
CANNABIS DEPENDENCY	2,332	9.53%
POLYSUBSTANCE DEPENDENCY	2,262	9.25%
OPIOIDS DEPENDENCY	779	3.18%
ALCOHOL ABUSE	693	2.83%
CANNABIS ABUSE	566	2.31%
COCAINE ABUSE	273	1.12%
AMPHETAMINES ABUSE	247	1.01%
Total	24,459	100.00%

Top Five Diagnosis Categories



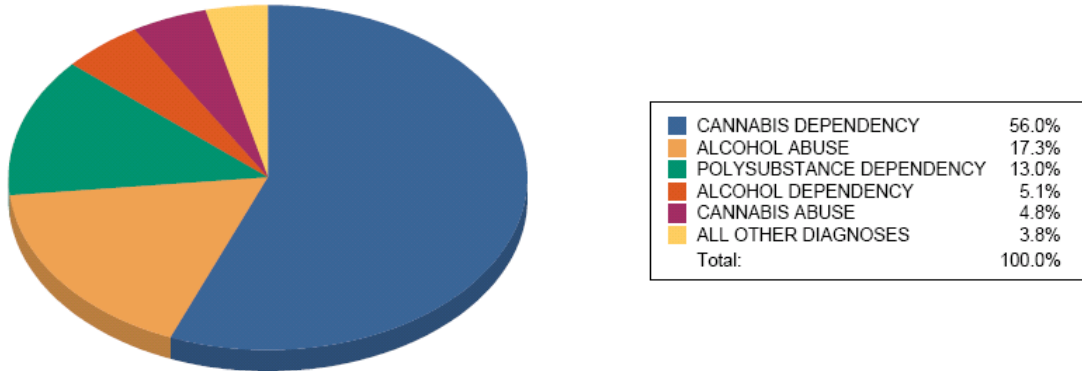
Addiction and Prevention Services State Quality Committee

All Regions both Funding Sources (Adolescent):

Hospital Detoxification and Higher Levels of Care Units by Diagnosis - Top 10

Diagnosis	Units	% of Total
CANNABIS DEPENDENCY	700	56.00%
ALCOHOL ABUSE	216	17.28%
POLYSUBSTANCE DEPENDENCY	163	13.04%
ALCOHOL DEPENDENCY	64	5.12%
CANNABIS ABUSE	60	4.80%
COCAINE DEPENDENCY	47	3.76%
Total	1,250	100.00%

Top Five Diagnosis Categories



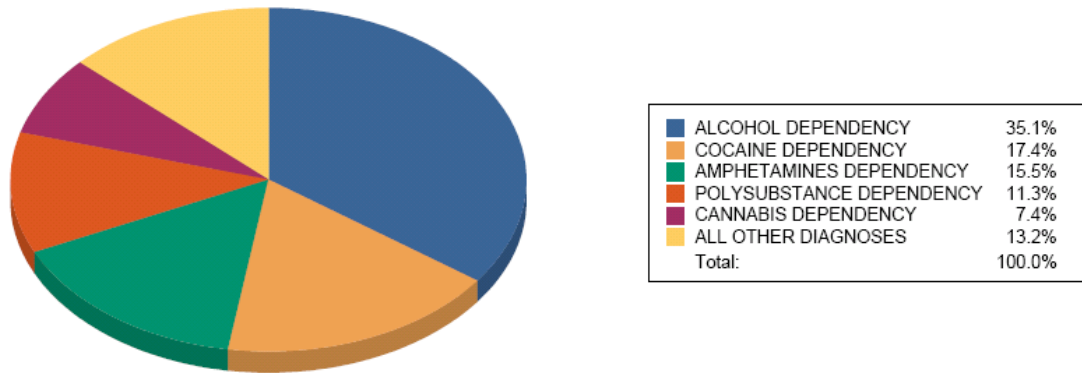
Addiction and Prevention Services State Quality Committee

All Regions Block Grant (Adult):

Hospital Detoxification and Higher Levels of Care Units by Diagnosis - Top 10

Diagnosis	Units	% of Total
ALCOHOL DEPENDENCY	6,593	35.08%
COCAINE DEPENDENCY	3,272	17.41%
AMPHETAMINES DEPENDENCY	2,919	15.53%
POLYSUBSTANCE DEPENDENCY	2,130	11.33%
CANNABIS DEPENDENCY	1,400	7.45%
ALCOHOL ABUSE	635	3.38%
OPIOIDS DEPENDENCY	613	3.26%
CANNABIS ABUSE	453	2.41%
COCAINE ABUSE	217	1.15%
AMPHETAMINES ABUSE	173	0.92%
Total	18,793	100.00%

Top Five Diagnosis Categories



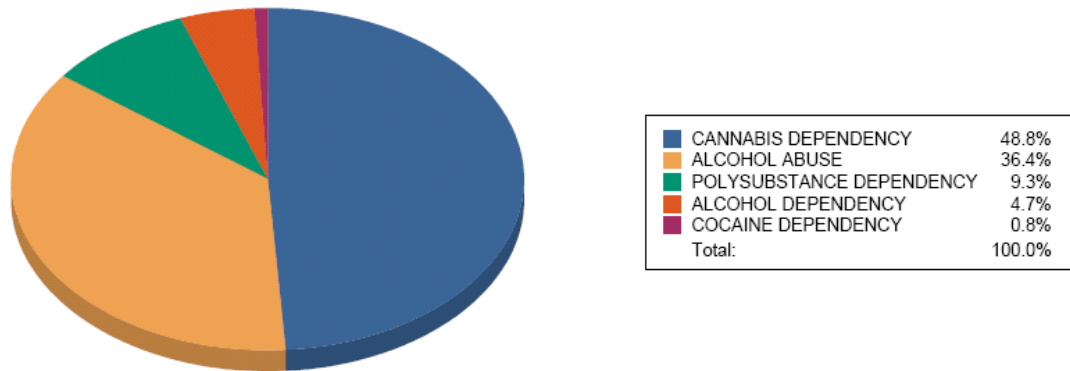
Addiction and Prevention Services State Quality Committee

All Regions Block Grant (Adolescent):

Hospital Detoxification and Higher Levels of Care Units by Diagnosis - Top 10

Diagnosis	Units	% of Total
CANNABIS DEPENDENCY	290	48.82%
ALCOHOL ABUSE	216	36.36%
POLYSUBSTANCE DEPENDENCY	55	9.26%
ALCOHOL DEPENDENCY	28	4.71%
COCAINE DEPENDENCY	5	0.84%
Total	594	100.00%

Top Five Diagnosis Categories



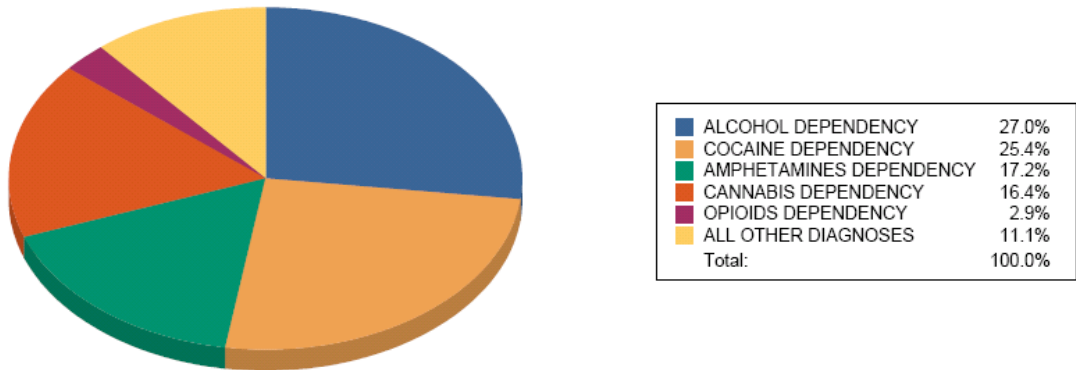
Addiction and Prevention Services State Quality Committee

All Regions Medicaid (Adult):

Hospital Detoxification and Higher Levels of Care Units by Diagnosis - Top 10

Diagnosis	Units	% of Total
ALCOHOL DEPENDENCY	1,530	27.00%
COCAINE DEPENDENCY	1,437	25.36%
AMPHETAMINES DEPENDENCY	974	17.19%
CANNABIS DEPENDENCY	932	16.45%
OPIOIDS DEPENDENCY	166	2.93%
POLYSUBSTANCE DEPENDENCY	132	2.33%
CANNABIS ABUSE	113	1.99%
AMPHETAMINES ABUSE	74	1.31%
INHALANTS ABUSE	62	1.09%
OTHER ABUSE	62	1.09%
Total	5,666	100.00%

Top Five Diagnosis Categories



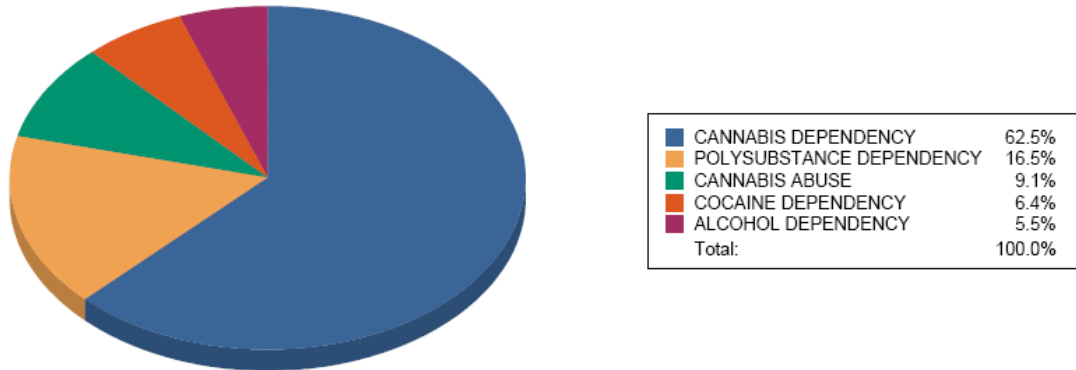
**Addiction and Prevention Services
State Quality Committee**

All Regions Medicaid (Adolescent):

Hospital Detoxification and Higher Levels of Care Units by Diagnosis - Top 10

Diagnosis	Units	% of Total
CANNABIS DEPENDENCY	410	62.50%
POLYSUBSTANCE DEPENDENCY	108	16.46%
CANNABIS ABUSE	60	9.15%
COCAINE DEPENDENCY	42	6.40%
ALCOHOL DEPENDENCY	36	5.49%
Total	656	100.00%

Top Five Diagnosis Categories

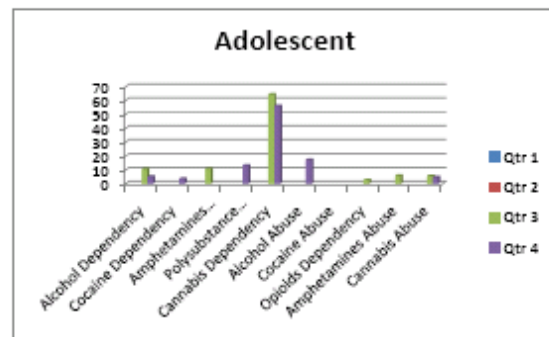
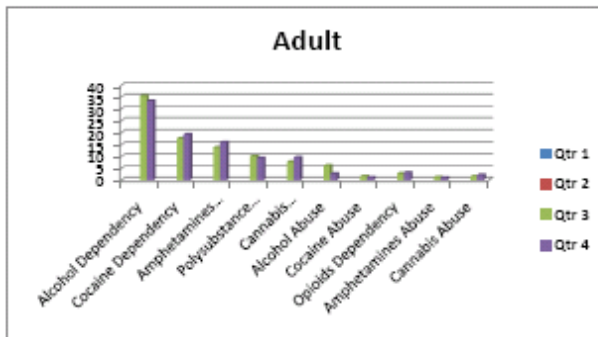


Addiction and Prevention Services State Quality Committee

Quarter Comparison (Adult and Adolescent):

Adult All Regions Quarter Comparison % of Total				
	Qtr 1	Qtr 2	Qtr 3	Qtr 4
Alcohol Dependency			35.44	33.21
Cocaine Dependency			17.47	19.25
Amphetamines Dependency			13.75	15.92
Polysubstance Dependency			10.15	9.25
Cannabis Dependency			7.74	9.53
Alcohol Abuse			6.22	2.83
Cocaine Abuse			1.68	1.12
Opioids Dependency			2.87	3.18
Amphetamines Abuse			1.26	1.01
Cannabis Abuse			1.65	2.31

Adolescent All Regions Quarter Comparison % of Total				
	Qtr 1	Qtr 2	Qtr 3	Qtr 4
Alcohol Dependency			10.60	5.12
Cocaine Dependency				3.76
Amphetamines Dependency			10.80	
Polysubstance Dependency				13.04
Cannabis Dependency			64.40	56.00
Alcohol Abuse				17.28
Cocaine Abuse				
Opioids Dependency			2.80	
Amphetamines Abuse			5.80	
Cannabis Abuse			5.60	4.80



Conclusions:

Fourth quarter for all regions and both funding sources

Adults: Alcohol and Cocaine dependency in that order are the two leading diagnosis.

Adolescents: Cannabis dependency and Alcohol abuse in that order are the two leading diagnosis.

Fourth quarter for all regions Block Grant

Adults: Alcohol and Cocaine dependency in that order are the two leading diagnosis.

Adolescents: Cannabis dependency and Alcohol abuse in that order are the two leading diagnosis.

Fourth quarter for all regions Medicaid

Adults: Alcohol and Cocaine dependency in that order are the two leading diagnosis.

Adolescents: Cannabis and Polysubstance dependency in that order are the two leading diagnosis.

From fourth quarter data, it appears that Alcohol and Cocaine dependency are the two leading diagnosis for adults, regardless of funding stream. This is consistent with the third quarter adult data for both funding streams.

**Addiction and Prevention Services
State Quality Committee**

For adolescents in fourth quarter, Cannabis dependency is the leading diagnosis. Alcohol abuse is the next leading diagnosis except for the Medicaid funding stream. For Medicaid, Polysubstance dependency is the next leading diagnosis.

A fiscal year comparison cannot be determined at this time due to the recent split in reporting of adult/adolescent data.

Other Dependency

ValueOptions has clarified the “other dependency” category. “Diagnosis codes 304.90 and 292.0 are reporting as “other dependency”. The actual diagnosis code description for these is as follows: 304.90 is “Unspecified Drug Dependency” and 292.0 is “Drug Withdrawal Syndrome”. The majority of claims that encounter these diagnoses come in as 304.90, which accounts for roughly 99% of the units reported in this diagnosis category.”

Substance Related Disorders

Please see below for more information from ValueOptions on the Substance Related Disorders category:

The Substance Related Disorders category resulted from diagnoses that were not rolled into appropriate categories in our reference table. This will be corrected for all future reports. In the meantime, here are the diagnoses that were included:

Diagnosis Code	VO Diagnosis Code Description
303.03	ACUTE ALCOHOLIC INTOXICATION IN ALCOHOLISM, IN REMISSION
292.12	DRUG-INDUCED HALLUCINOSIS
304.83	COMBINATIONS OF DRUG DEPENDENCE EXCLUDING OPIOID TYPE DRUG, IN REMISSION
305.03	ALCOHOL ABUSE, IN REMISSION
305.93	OTHER, MIXED, OR UNSPECIFIED DRUG ABUSE, IN REMISSION
291.89	ALCOHOL INDUCED DISORDERS
292.84	DRUG-INDUCED ORGANIC AFFECTIVE SYNDROME
304.11	BARBITURATE AND SIMILARLY ACTING SEDATIVE OR HYPNOTIC DEPENDENCE, CONTINUOUS USE
304.33	CANNABIS DEPENDENCE, IN REMISSION
292.81	DRUG-INDUCED DELIRIUM
304.71	COMBINATIONS OF OPIOID TYPE DRUG WITH ANY OTHER DRUG DEPENDENCE, CONTINUOUS USE
305.51	OPIOID ABUSE, CONTINUOUS USE
305.91	OTHER, MIXED, OR UNSPECIFIED DRUG ABUSE, CONTINUOUS USE

Preliminary Recommendations to Committee:

- It is recommended that the Committee continue to monitor trends.
- Other Abuse diagnosis still needs clarified with ValueOptions if “Other Abuse” diagnosis is included in the chart above.
- As recommended in the May SQC meeting for the Lower Levels of Care Diagnosis AA (VO #13), the Quarter Comparison tables and chart should be incorporated into future reports for the Higher Levels of Care.
- It was also recommended in the last SQC meeting for the Lower Levels of Care Diagnosis AA (VO #13) that ValueOptions provide in their annual reports, the top 3 drugs of choice for each region and overall. Based upon these drugs of choice, it was further recommended that ValueOptions develop or provide consumer tip sheets and any tip sheets that are developed by presented to the SQC for approval. Currently, ValueOptions is providing quarterly reports for both the Higher and Lower Levels of

**Addiction and Prevention Services
State Quality Committee**

Care by Diagnosis reports, not annual. It is requested by the SQC that ValueOptions provide annual reports for both, in addition to the quarterly reports, next fiscal year and bring an ad hoc report to the SQC for FY2008.

- **Community norms impact these numbers.**
- **Potential connection to CTC data.**
- **Potential future Performance Improvement Project.**
- **It is also recommended by the Committee that this aggregate analysis and the ad hoc report presented by ValueOptions (split into Higher and Lower Levels of Care) be shared at the SRS Regional QI meeting and posted on the ValueOptions website for public access.**

Date Presented to SQC: 8/26/2008

BY: Kim Brown

Recommendations from the Committee for action: Recommendation and changes made by the SQC to the preliminary recommendations are noted above in **bold**.

Person Responsible to follow-up and date due: Kim Brown 11/6/08