

**Addiction and Prevention Services
State Quality Committee**

Draft

AGGREGATE ANALYSIS REPORT

Reporting Period FROM: July 1, 2010 TO: June 30, 2011
FY2011 Annual Summary

Unit/Team/Department:
PIHP Quality Improvement

Topic/Project:
Over and Under Utilization
Lower Levels of Care Diagnosis (VO #13, Grid Row #10)

Monitoring Standard:
42 CFR 438.240 (a and b) Quality Assessment and Performance Improvement Program
Utilization Management policies and procedures:
42 CFR 438.210 (b-e) Coverage and authorization of services
42 CFR 438.242 Health Information System

Goal:
The PIHP will track and report quarterly to SRS/AAPS utilization of lower levels of care by diagnosis.

Objectives:
To assure the PIHP is capturing the data
To evaluate for trends that may require system intervention and education
To allow data to be presented consistently for Committee evaluation and response

Data Collection Activities:
Data was collected from the ValueOptions CareConnect (claims) system. Utilization report including Intensive Outpatient, Outpatient and Other services reported together. The report details include the diagnosis description to include 'abuse' or 'dependency' along with the percent of total units. The report will include graphs showing a visual representation of the diagnosis distribution. Only the top ten diagnoses for the overall fiscal year-to-date are displayed. Any other diagnosis encountered is included in the “All Other Diagnoses” category. When a member presents in the “Other” region category, the county/region of origin could not be located for that member. This report will be provided as an aggregate, as well as, by SRS region.

Definitions:

Other Dependency

ValueOptions has clarified the “other dependency” category. “Diagnosis codes 304.90 and 292.0 are reporting as “other dependency”. The actual diagnosis code description for these is as follows: 304.90 is “Unspecified Drug Dependency” and 292.0 is “Drug Withdrawal Syndrome”. The majority of claims that encounter these diagnoses come in as 304.90, which accounts for roughly 99% of the units reported in this diagnosis category.”

**Addiction and Prevention Services
State Quality Committee**

Other Abuse

ValueOptions has clarified the “other abuse” category. The first code falling into this category is 305.10, tobacco use disorder, which ValueOptions paid for up until January 1, 2009. 305.80, antidepressant type abuse is also in this category. Codes 305.90, 305.91, 305.92 and 305.93 are included as “other mixed or unspecified drug abuse”. The final code, V71.09 “other suspected mental condition” is used by providers as a billing code for assessments if the assessment does not show a substance use disorder. The code allows providers to be paid for the assessment but acknowledges that there is no need for treatment.

All Other Diagnoses

Only the top ten diagnoses for the overall Fiscal Year to Date are displayed in the report. Any other diagnosis encountered is included in the “All Other Diagnoses” category.

Results: See Attachment A

Conclusions:

Fiscal YTD by Region, All Funding Sources, All Ages Lower Levels of Care (Top 3)

*When a member shows up in the “Other” region category, the county/region could not be found.

Top 3 Diagnosis Fiscal YTD 2011 by SRS Region

SRS Region	Cannabis Abuse	Alcohol Dependency	Alcohol Abuse	Cannabis Dependency	Amphetamines Dependency
Kansas City	First	Second	Third		
Northeast	First	Third	Second		
South Central	Third	First		Second	
Southeast	Second	First		Third	
West	First	Third	Second		
Wichita	First	Second		Third	
Other		Third	First		Second

Top 3 Diagnosis Fiscal YTD 2010 by SRS Region

SRS Region	Cannabis Abuse	Alcohol Dependency	Alcohol Abuse	Cannabis Dependency
Kansas City	First	Second	Third	
Northeast	First	Third	Second	
South Central	Second	First	Third	
Southeast	Third	First		Second
West	Third	First	Second	
Wichita	First	Second	Third	
Other	Second	Third	First	

**Addiction and Prevention Services
State Quality Committee**

Trending from FY10 to FY11 (using above charts for comparison):

SRS Region	First	Second	Third
Kansas City	No change – Cannabis Abuse	No change – Alcohol Dependency	No change – Alcohol Abuse
Northeast	No change – Cannabis Abuse	No change – Alcohol Abuse	No change – Alcohol Dependency
South Central	No change – Alcohol Dependency	Changed from Cannabis Abuse to Cannabis Dependency	Changed from Alcohol Abuse to Cannabis Abuse
Southeast	No change – Alcohol Dependency	Changed from Cannabis Dependency to Cannabis Abuse	Changed from Cannabis Abuse to Cannabis Dependency
West	Changed from Alcohol Dependency to Cannabis Abuse	No change – Alcohol Abuse	Changed from Cannabis Abuse to Alcohol Dependency
Wichita	No change – Cannabis Abuse	No change – Alcohol Dependency	Changed from Alcohol Abuse to Cannabis Dependency
Other	No change – Alcohol Abuse	Changed from Cannabis Abuse to Amphetamines Dependency	No change – Alcohol Dependency

*We do not have Fiscal YTD information for FY2009, therefore, annual trending cannot be determined for that Fiscal year.

FY2011 Annual Summary

As recommended in the last aggregate analysis, ValueOptions continues to provide annual reports showing a full fiscal year (see Attachment A).

As recommended in the last aggregate analysis, trending by Fiscal YTD is completed and shown in the table above.

As recommended in the last aggregate analysis, it was recommended by the Committee for VO to bring some of this data (top three substances of abuse and current trending) to April face-to-face provider meeting. This recommendation was completed.

Adults:

- For Medicaid, trending is rather consistent from year-to-year. The top 3 leading diagnosis Fiscal YTD in order from highest to lowest is:
 - For FY2011, Alcohol dependency (17.91%), Cannabis abuse (14.73%), and Cannabis dependency (13.45%).
 - For FY2010, Alcohol dependency (18.45%), Cannabis abuse (15.01%), and Alcohol abuse (11.98%).
 - For FY2009, Alcohol dependency, Cannabis dependency or Cannabis abuse were the leading diagnosis depending upon the quarter for Medicaid adult members

**Addiction and Prevention Services
State Quality Committee**

- For AAPS funded, trending is also consistent from year-to-year. The top 3 leading diagnosis Fiscal YTD in order from highest to lowest is:
 - For FY2011, Alcohol dependency (20.82%), Alcohol abuse (20.31%), and Cannabis Abuse (13.35%)
 - For FY2010, Alcohol dependency (26.15%), Alcohol abuse (21.79%), and Cannabis Abuse (13.05%).
 - For FY2009, Alcohol dependency was also the leading diagnosis for AAPS adult members.

Adolescents:

- For Medicaid, trending is again consistent from year-to-year. The top 3 leading diagnosis Fiscal YTD in order from highest to lowest is:
 - For FY2011, Cannabis abuse (56.92%), Cannabis dependency (20.98%), and Alcohol abuse (10.34%)
 - For FY2010, Cannabis abuse (54.57%), Cannabis Dependency (20.46%), and Alcohol abuse (9.85%).

- For AAPS funded, trending is also consistent from year-to-year. The top 3 leading diagnosis Fiscal YTD in order from highest to lowest is:
 - For FY2011, Cannabis abuse (58.38%), Cannabis dependency (23.84%), and Alcohol abuse (6.96%)
 - For FY2010, Cannabis Abuse (55.43%), Cannabis dependency (21.30%), and Alcohol abuse (15.81%).
 - For FY2009, Cannabis abuse was the leading diagnosis for both funding streams each quarter for adolescents.

All Funding Sources, All Ages, Statewide:

- For all funding sources, all ages, statewide trending is consistent but fluctuates within the top 3 diagnosis. The top 3 leading diagnosis Fiscal YTD in order from highest to lowest is:
 - For FY2011, Cannabis abuse (21.38%), Alcohol dependency (17.02%), and Alcohol abuse (16.75%)
 - For FY2010, Alcohol dependency (20.73%), Cannabis abuse (20.18%), and Alcohol abuse (17.74%).

Preliminary Recommendations to Committee:

- It is recommended that the Committee continue to monitor trends.
- It is also recommended by the Committee that this aggregate analysis be posted on the ValueOptions website for public access.
- **It is recommended that ValueOptions run this report annually rather than quarterly due to consistency in leading diagnosis trending.**
- **The aggregate report will be eliminated and the report by ValueOptions will be reduced to presenting trending change as shown in the bottom table, page 3.**

**Addiction and Prevention Services
State Quality Committee**

Date Presented to SQC: 2/10/2012

BY: Cissy McKinzie

Recommendations from the Committee for action: Committee approves of the Preliminary Recommendations as shown above. Enhancements made by the SQC to the Preliminary Recommendations are noted above in **bold**.

Person Responsible to follow-up and date due: Kim Brown 5/18/12

**Addiction and Prevention Services
State Quality Committee**

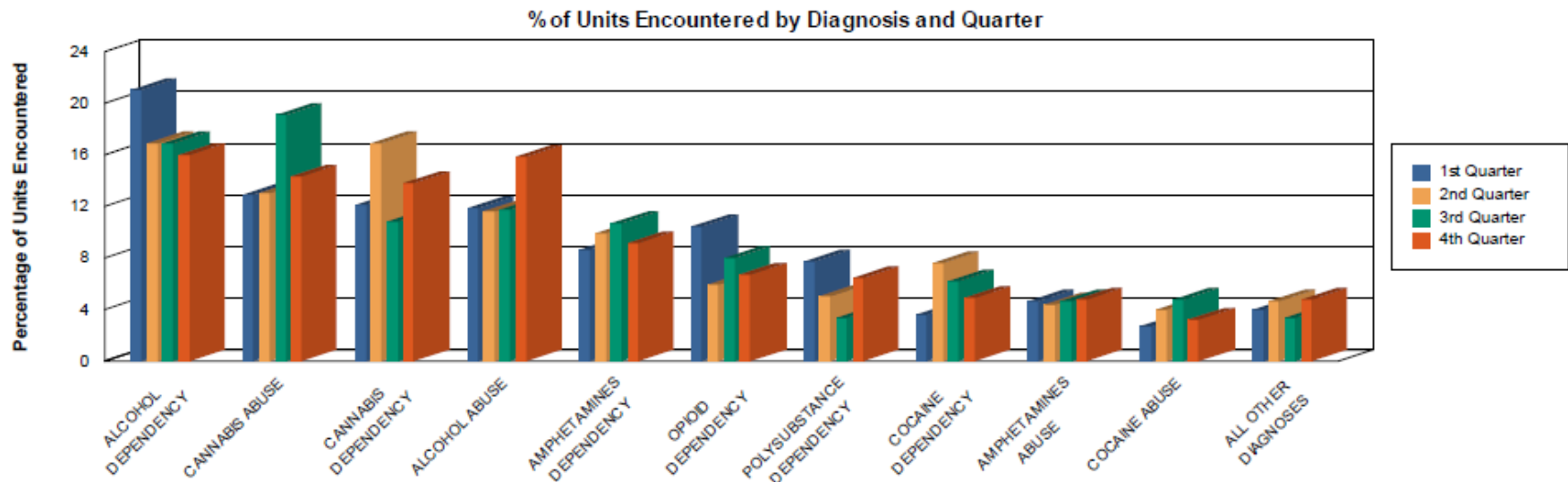
Attachment A:

Medicaid Adult Statewide:

Medicaid - Adult - LLOC - Statewide

July 1, 2010 to June 30, 2011

Diagnosis	1st Quarter	2nd Quarter	3rd Quarter	4th Quarter	Fiscal YTD
ALCOHOL DEPENDENCY	21.06%	16.88%	16.95%	16.06%	17.91%
CANNABIS ABUSE	12.88%	13.05%	19.17%	14.31%	14.73%
CANNABIS DEPENDENCY	12.18%	16.89%	10.91%	13.83%	13.45%
ALCOHOL ABUSE	11.94%	11.63%	11.78%	15.87%	12.67%
AMPHETAMINES DEPENDENCY	8.65%	9.99%	10.76%	9.12%	9.60%
OPIOID DEPENDENCY	10.51%	5.90%	8.01%	6.68%	7.89%
POLYSUBSTANCE DEPENDENCY	7.72%	5.02%	3.40%	6.41%	5.71%
COCAINE DEPENDENCY	3.68%	7.66%	6.23%	4.87%	5.58%
AMPHETAMINES ABUSE	4.62%	4.34%	4.63%	4.84%	4.60%
COCAINE ABUSE	2.69%	3.96%	4.84%	3.28%	3.66%
ALL OTHER DIAGNOSES	4.07%	4.69%	3.32%	4.73%	4.19%

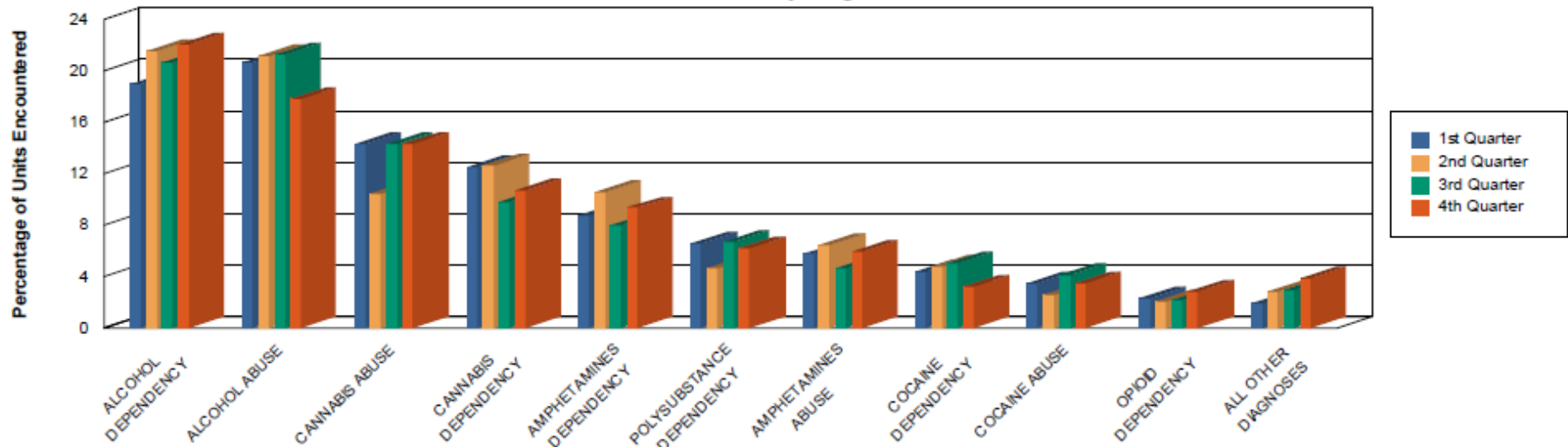


Addiction and Prevention Services State Quality Committee

AAPS Adult Statewide:
AAPS - Adult - LLOC - Statewide
July 1, 2010 to June 30, 2011

Diagnosis	1st Quarter	2nd Quarter	3rd Quarter	4th Quarter	Fiscal YTD
ALCOHOL DEPENDENCY	18.98%	21.65%	20.68%	22.06%	20.82%
ALCOHOL ABUSE	20.66%	21.20%	21.35%	17.83%	20.31%
CANNABIS ABUSE	14.39%	10.50%	14.31%	14.35%	13.35%
CANNABIS DEPENDENCY	12.56%	12.71%	9.84%	10.74%	11.50%
AMPHETAMINES DEPENDENCY	8.77%	10.57%	8.08%	9.38%	9.21%
POLYSUBSTANCE DEPENDENCY	6.62%	4.67%	6.69%	6.18%	6.03%
AMPHETAMINES ABUSE	5.76%	6.53%	4.65%	6.01%	5.74%
COCAINE DEPENDENCY	4.45%	4.73%	5.06%	3.29%	4.40%
COCAINE ABUSE	3.49%	2.61%	4.13%	3.47%	3.42%
OPIOID DEPENDENCY	2.38%	2.04%	2.20%	2.79%	2.34%
ALL OTHER DIAGNOSES	1.93%	2.81%	3.03%	3.90%	2.89%

% of Units Encountered by Diagnosis and Quarter



Addiction and Prevention Services State Quality Committee

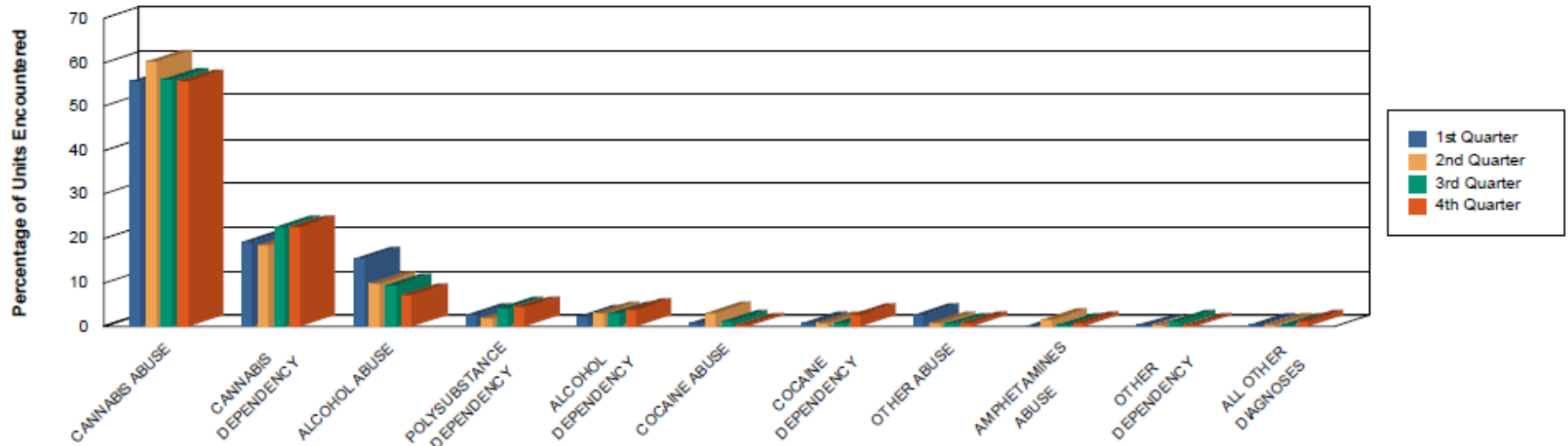
Medicaid Adolescent Statewide:

Medicaid - Adolescent - LLOC - Statewide

July 1, 2010 to June 30, 2011

Diagnosis	1st Quarter	2nd Quarter	3rd Quarter	4th Quarter	Fiscal YTD
CANNABIS ABUSE	55.69%	60.41%	56.12%	55.97%	56.92%
CANNABIS DEPENDENCY	19.35%	18.31%	22.80%	22.58%	20.98%
ALCOHOL ABUSE	15.50%	9.87%	9.46%	7.17%	10.34%
POLYSUBSTANCE DEPENDENCY	2.53%	1.84%	4.09%	4.35%	3.31%
ALCOHOL DEPENDENCY	2.19%	3.05%	2.91%	3.96%	3.04%
COCAINE ABUSE	0.61%	3.06%	1.31%	0.31%	1.28%
COCAINE DEPENDENCY	0.86%	0.66%	0.81%	2.74%	1.28%
OTHER ABUSE	2.60%	0.76%	0.59%	0.76%	1.13%
AMPHETAMINES ABUSE	0.04%	1.46%	0.58%	0.62%	0.66%
OTHER DEPENDENCY	0.22%	0.21%	1.10%	0.45%	0.54%
ALL OTHER DIAGNOSES	0.42%	0.37%	0.24%	1.08%	0.52%

% of Units Encountered by Diagnosis and Quarter



Addiction and Prevention Services State Quality Committee

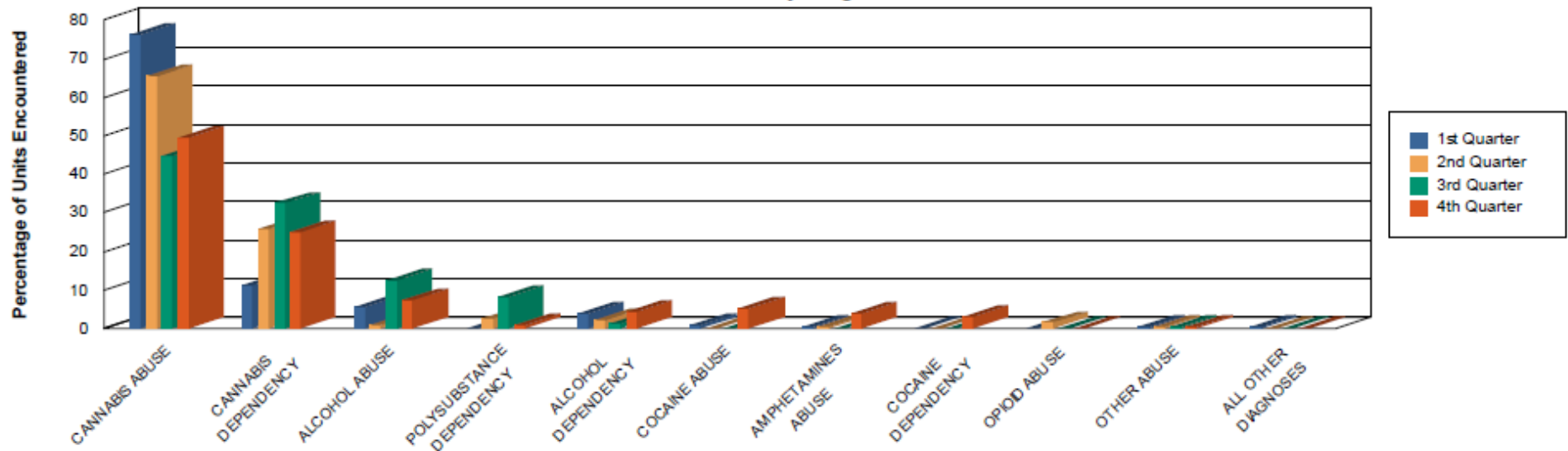
AAPS Adolescent Statewide:

AAPS - Adolescent - LLOC - Statewide

July 1, 2010 to June 30, 2011

Diagnosis	1st Quarter	2nd Quarter	3rd Quarter	4th Quarter	Fiscal YTD
CANNABIS ABUSE	76.32%	65.32%	44.78%	49.39%	58.38%
CANNABIS DEPENDENCY	11.30%	26.00%	32.54%	25.05%	23.84%
ALCOHOL ABUSE	5.82%	1.01%	12.45%	7.26%	6.96%
POLYSUBSTANCE DEPENDENCY	0.11%	2.73%	8.25%	1.04%	3.14%
ALCOHOL DEPENDENCY	3.93%	2.33%	1.47%	4.48%	3.05%
COCAINE ABUSE	1.06%	0.03%	0.02%	5.34%	1.65%
AMPHETAMINES ABUSE	0.58%	0.46%	0.02%	3.75%	1.22%
COCAINE DEPENDENCY	0.00%	0.03%	0.00%	3.07%	0.80%
OPIOID ABUSE	0.00%	1.53%	0.05%	0.21%	0.40%
OTHER ABUSE	0.27%	0.49%	0.37%	0.42%	0.38%
ALL OTHER DIAGNOSES	0.61%	0.06%	0.05%	0.00%	0.18%

% of Units Encountered by Diagnosis and Quarter



Addiction and Prevention Services State Quality Committee

All Funding Sources, All Ages, Statewide:

All Fund Sources - All Ages - LLOC - Statewide

July 1, 2010 to June 30, 2011

Diagnosis	1st Quarter	2nd Quarter	3rd Quarter	4th Quarter	Fiscal YTD
CANNABIS ABUSE	20.81%	18.77%	23.78%	22.21%	21.38%
ALCOHOL DEPENDENCY	16.90%	17.69%	16.19%	17.33%	17.02%
ALCOHOL ABUSE	17.50%	17.11%	16.91%	15.37%	16.75%
CANNABIS DEPENDENCY	13.40%	14.65%	12.91%	13.71%	13.66%
AMPHETAMINES DEPENDENCY	7.38%	8.86%	6.98%	7.57%	7.70%
POLYSUBSTANCE DEPENDENCY	6.22%	4.33%	5.52%	5.82%	5.47%
AMPHETAMINES ABUSE	4.58%	5.23%	3.79%	4.78%	4.59%
COCAINE DEPENDENCY	3.68%	4.79%	4.42%	3.52%	4.11%
OPIOID DEPENDENCY	4.07%	2.63%	2.98%	3.08%	3.20%
COCAINE ABUSE	2.84%	2.95%	3.68%	2.92%	3.10%
ALL OTHER DIAGNOSES	2.61%	3.00%	2.83%	3.69%	3.02%

